

Control software (ESD Soft 6) for ESD simulators

RUNS UNDER WIN7, WIN10

- For ESD simulators **ESD16** and **ESD30**
- Operation via serial interface



**All parameters via
ESD Soft 6 adjustable**

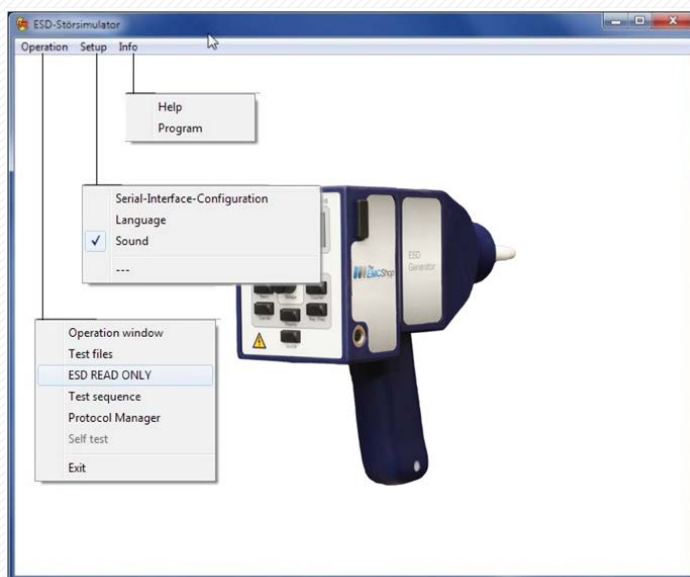
OVERVIEW

The program ESD-SOFT allows to operate the The EMCShop ESD simulators via a interface. The program, which runs under Microsoft® Windows®, controls the ESD generators via a light wave interface cable.

All parameters, which can also be operated directly on the ESD simulator, can be set. In addition, there is the possibility to define ramp functions and device-specific test sequences.

KEY FACTS

- LWL cable included in the scope of delivery
- Remote control via interface
- Logging of ESD tests possible
- Automation of test cycles



With the help of the sequence control, several individual programs can be lined up and thus complex test sequences can be created.

Furthermore, with its "ESD READ ONLY" function, the software allows you to log your manually performed ESD tests.



FUNCTIONS

In this window all parameters are set which are transmitted to the ESD generator. The individual parameters are designed as list fields so that the permitted values can be accessed conveniently.

An automatic plausibility check is performed to ensure that only values within the limit parameters are transmitted.

	Type	S/N
Device	SESD216	204025
Cap.-module	150	
Res.-module	330	
Pol.-module	Electr.	
Discharg.-mod.	IEC/ISO	

In "READ ONLY" mode, the software registers all operations performed on the ESD generator.

This function allows a transcript of the manual test procedures performed during the ESD test.

	Type	S/N
Device	SESD 230	202009
Cap.-module	150	
Res.-module	330	
Pol.-module	Electr.	
Discharg.-mod.	IEC/ISO	

SCOPE OF DELIVERY

- USB-Stick with ESD-Soft 6, incl. user manual
- LWL-cable, USB-RS232 Converter, length = 10 m

OPTIONS

- Adapter USB 2.0/RS232 (D-Sub Adapter)

